

# TravelScan® Pro 600

Simplex Card & Document Scanner with AmbirScan BCS Software

sales@ambir.com  
630-530-5400 Option 2  
www.ambir.com



## AmbirScan BCS Software Highlights:

### Import Contacts Directly to Outlook.

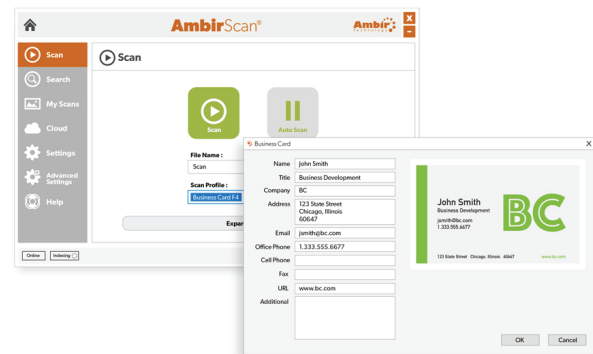
Included Single PC Business Card Software License provides compatibility with Microsoft Outlook, making importing and exporting contacts easy and hassle-free. Automatic detection of duplicated information when adding new contacts to an existing Microsoft Outlook database saves you valuable time.

### Data Backup.

Never lose business card information again with automatic data backup creation. Scanning cards creates a .CSV file to store and backup data.

### Work Faster.

With AmbirScan's automatic card orientation detection and Quick Scan features, scanning is fast, easy, and accurate so you'll never waste valuable productivity time.



### Data Backup.

Never lose business card information again with automatic data backup creation. Scanning cards creates a .CSV file to store and backup data.



©2019 Ambir Technology Inc. All rights reserved. The Ambir logo is a trademark of Ambir Technology Inc. Features, specifications and bundled software application(s) and/or version numbers of software applications are subject to change without notice. Windows is a registered trademark of Microsoft Corporation in the United States and other countries. All trademarks and registered trademarks and the property of their respective owners.

# TravelScan® Pro 600

Simplex Document & ID Scanner w/AmbirScan BCS Software  
Ambir Part Number: PS600-BCS



## Specifications

<b>Scan Modes</b>	48-bit internal color, outputs 24-bit true color, 8-bit grayscale & 1-bit B&W
<b>Scan Speed</b>	Business Card; 3 seconds per card in grayscale mode at 300dpi** 11 seconds per single-sided page in black and white mode at 200dpi**
<b>Scan Area</b>	maximum 8.5" x 14" (216mm x 355mm)
<b>Media Thickness</b>	up to 1mm
<b>Interface</b>	USB 2.0 hardware & compatible w/USB 1.1
<b>Optical Resolution</b>	up to 600dpi
<b>Dimensions (LxWxH)</b>	12.4" x 2.0" x 1.7" (315mm x 51mm x 43mm)
<b>Scanner Weight</b>	12.6 oz (357g)
<b>Image Sensor</b>	CMOS CIS (Contact Image Sensor)
<b>Paper Sensor</b>	Mechanical
<b>Cable Length</b>	6' (1.8m) detachable USB
<b>Regulatory Requirement</b>	FCC Class B, CE,
<b>Environment Requirement</b>	RoHS, WEEE
<b>Part Number</b>	PS600-BCS

## Features & Benefits:

### Ultra-Compact Footprint

At about the size of a three-hole punch, the TravelScan Pro takes up far less space than flatbed scanners. That makes it perfect for crowded desks and mobile users.

### USB-Powered Convenience

Because it's powered by your computer's USB port, you'll never search for an outlet or carry a bulky AC adapter again.

### Superior Media Handling

Because it's powered by your computer's USB port, you'll never search for an outlet or carry a bulky AC adapter again.

### Broad Compatibility

The included TWAIN driver ensures compatibility with thousands of software applications and hardware systems.

### Professional-Grade Quality

Durable and reliable enough for high volume environments like hospitals, banks and busy points of sale.

### Straight-to-PDF Scanning

With included AmbirScan image acquisition software, users can scan directly to industry-standard PDF format.

### Autocontinue Function

This AmbirScan feature allows you to continuously feed media, meaning piles of documents or cards can be scanned quickly.

## System Requirements

Windows 7/8/10  
Pentium 4 processor or higher  
1 GB or more of RAM  
270 MB free disk space  
Available USB port

[sales@ambir.com](mailto:sales@ambir.com) / [630-530-5400 Option 2](tel:630-530-5400) / [www.ambir.com](http://www.ambir.com)

© 2019 Ambir Technology Inc. All rights reserved. The Ambir logo is a trademark of Ambir Technology Inc. Features, specifications and bundled software application(s) and/or version numbers of software applications are subject to change without notice. Windows is a registered trademark of Microsoft Corporation in the United States and other countries. All trademarks and registered trademarks and the property of their respective owners.

