

nScan® 690gt

with AmbirScan BCS Software



Model #DS690gt-BCS
\$379.95



Small footprint to fit anywhere on — nearly any desk.



Scan both sides — of any plastic or paper card.

Import Contacts Directly to Outlook.

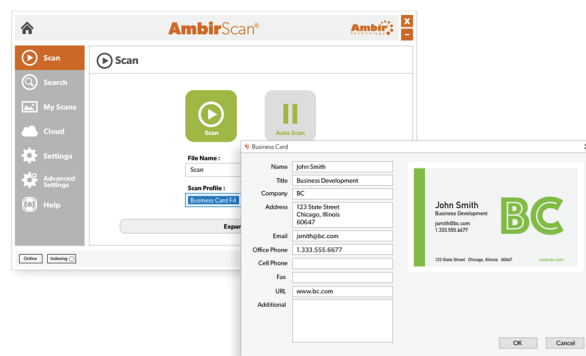
Included Single PC Business Card Software License provides compatibility with Microsoft Outlook, making importing and exporting exporting contacts easy and hassle-free. Automatic detection of duplicated information when adding new contacts to an existing Microsoft Outlook database saves you valuable time.

Data Backup.

Never lose business card information again with automatic data backup creation. Scanning cards creates a .CSV file to store and backup data.

Work Faster.

With AmbirScan's automatic card orientation detection and Quick Scan features, scanning is fast, easy, and accurate so you'll never waste valuable productivity time.



Data Backup.

Never lose business card information again with automatic data backup creation. Scanning cards creates a .CSV file to store and backup data.

sales@ambir.com / 630-530-5400 Option 2 / www.ambir.com

©2019 Ambir Technology, Inc. All rights reserved. The Ambir logo is a registered trademarks of Ambir Technology, Inc. Features, specifications and bundled software application(s) and/or version numbers of software applications are subject to change without notice. Windows is a registered trademark of Microsoft Corporation in the United States and other countries. All trademarks and registered trademarks are the property of their respective owners.

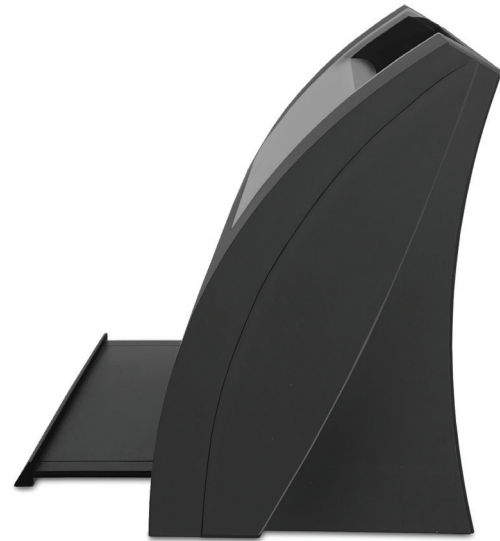
nScan® 690gt

Card scanning that's fast and clear. Scan in less than one second.

CITRIX® ready



Straight paper path makes scanning cards easy with no jams or interruptions



Includes built in Kensington security slot



Advanced TWAIN driver for compatibility with nearly any application.

Specifications

Model #:	DS690gt	Scan Speed:	approximately 1-2 seconds to scan a standard sized ID card
Interface:	USB 2.0	Scan Area:	4.1" x 10" (104mm x 254mm)
Dimensions (LxWxH):	3.3" x 6.6" x 5.0" (84mm x 168mm x 128mm)	System Requirements:	Windows 7/8/10 & Outlook 2010 and up One available USB port (USB 3.0 recommended)
Weight:	1.33 lbs (605 grams)	Media Thickness:	up to 1 mm
Scan Modes:	48-bit internal color/outputs 24-bit true color, 8-bit greyscale & 1-bit B&W	Security:	Includes Kensington security slot
Optical Resolution:	up to 600 dpi	Drivers:	TWAIN 1.9; Android, Linux & WinCE drivers may be developed upon request
Paper Sensor:	Optical	Developer Resources:	SDK available upon request
Image Sensor:	2 CIS modules (duplex scanning)		
Motor Speed:	3 inches per second @ 300 dpi color scanning; 0.9 inches per second @ 600 dpi color scanning		