

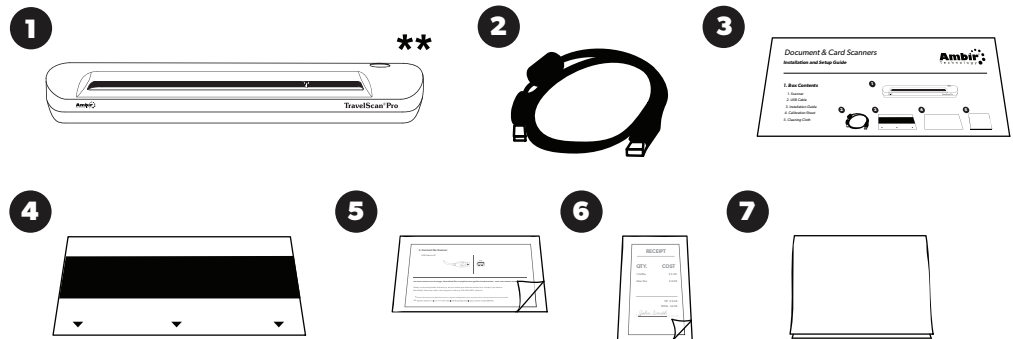
# Document & Card Scanners

## Installation and Setup Guide



### 1. Box Contents\*

1. Scanner
2. USB Cable
3. Installation Guide
4. 2 Calibration Sheets
5. 1 Photo Sleeve
6. 1 Receipt Sleeve
7. 1 Cleaning Sheet

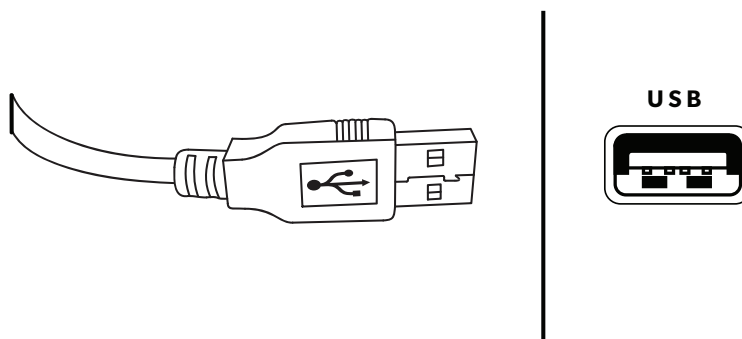


### 2. Install Drivers and Software

Download software and drivers here: [www.ambir.com/document-card-set](http://www.ambir.com/document-card-set)  
Install the downloaded software and drivers before you connect the scanner.

### 3. Connect the Scanner

USB Cable to PC



For more details on settings, download the complete user guide at [www.ambir.com/document-card-set](http://www.ambir.com/document-card-set)

Thank you choosing Ambir Technology. We appreciate your business and are here to help if you need us.  
Need Help? Visit [www.ambir.com/support](http://www.ambir.com/support) or call us @ 630-530-5400, option 3.

\* Photo/document/receipt sleeves box content configuration may vary based on your purchased scanner model.

\*\* Scanner shown (TravelScan Pro® 600) is for illustrative purposes only, your scanner may be different.