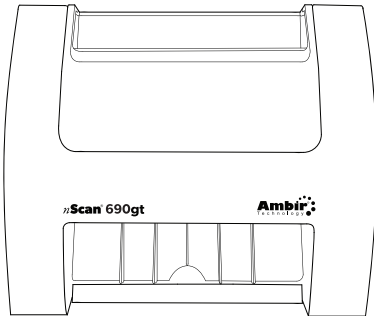


Box Contents:



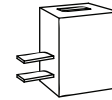
1 nScan[®] 690gt Scanner



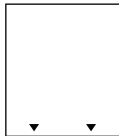
1 6' (1.8m) USB Cable



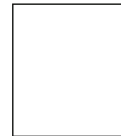
1 5' (1.5m) T Cable for USB Power Adapter



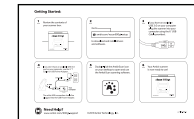
1 USB Power Adapter



1 Calibration Sheet
Please keep the calibration sheet as the scanner requires periodic calibration.



1 Cleaning Sheet
For best results, add a few drops of alcohol onto the cleaning sheet.



1 Installation Guide

Getting Started:

1 Review the contents of your scanner box.

2 Go to ambir.com/nscan690gt-setup to download and install drivers and software.

3 If you have an available USB 3.0 on your computer plug the scanner into your computer using the 6' USB Cable provided.

4 If you don't have an available USB 3.0 port on your computer, use the 5' T Cable for USB Power Adapter.

The white USB connection should be plugged into the USB Power Adapter.

5 Double-click the AmbirScan icon on your desktop to open and use the AmbirScan scanning software.

6 Your Ambir scanner is now ready to use!